

SUNSHADE SYSTEM

CATALOGUE



onmar 

ENHANCING BRAND VALUE



Sunshade System is a self-tensioning and free-standing system that is easy to set up, take down and store. It adapts well to a multitude of installation configurations. Sockets can be installed at any desired position for more complete coverage in comparison to traditional systems. The system is highly cost-efficient in comparison to many industry standard systems.

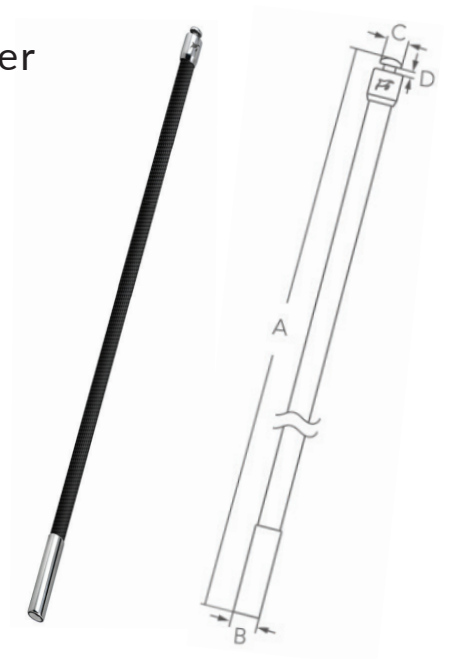
POLE

Stainless Steel 316 & Fiberglass With Carbon Fiber

- Quality carbon fiber finish on each pole.
- Compatible with any customized canvas.

PART NUMBER

PART NUMBER	A mm	B mm	C mm	D mm
M7-91-0506851	1215	22	18	5
M7-91-0506852	1372	22	18	5
M7-91-0506853	1535	22	18	5
M7-91-0506854	1700	22	18	5
M7-91-0506855	1845	22	18	5
M7-91-0506856	2000	22	18	5



SOCKET W/CAP

Stainless Steel 316

- Designed with a 15° angle to create self-tensioning of poles, ensuring secure installment.
- Anti-rattle design incorporates a rubber bushing under the cap hinge to ensure that the cap stays in the open or closed position underway.
- Cap is designed to prevent water flowing directly into the socket. However, this socket is not self-draining and must be maintained to prevent corrosion as rusting may result from sitting water.
- Requires a 22.5 mm installation hole with 15° angle.
- U-shaped backing plate is included.
- Screw size M5 or #10.



PART NUMBER

	A mm	B mm	C mm	D mm
M7-92-0506865	28	49	67	13



SOCKET STUD TYPE

Stainless Steel 316

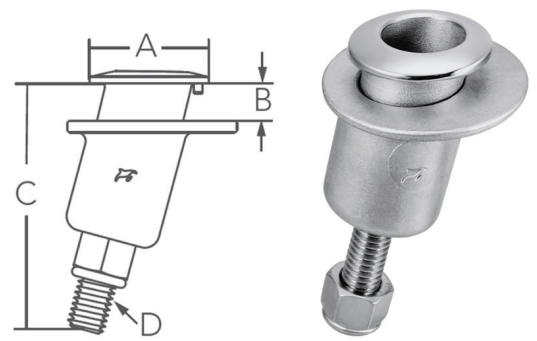
- Designed with a 15° angle to create self-tensioning of poles, ensuring secure installment.
- Small face with low profile, ideal for boats with narrow gunnels.
- Self-draining design incorporates a threaded barb for 12.5 mm draining hose.
- Included seal gasket eliminates the need for caulking.
- Requires a 22.5 mm installation hole with 15° angle and a notch hole to align the angle in the right direction.



To simplify installation, use installation plate.

PART NUMBER

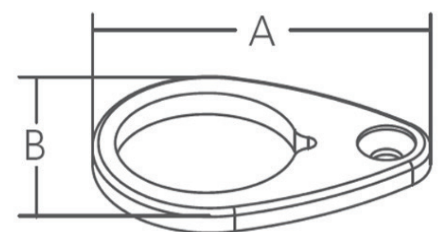
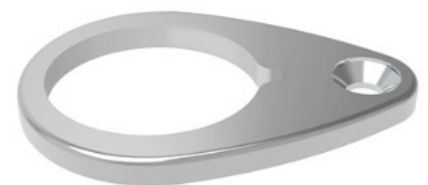
	A mm	B mm	C mm	D mm
M7-92-0506867	40	13-22	85	12,7-13



INSTALLATION PLATE

Stainless Steel 316

- Simplifies installation process of M7-92-0506867.
- Eliminates the need to cut a notch for socket orientation.
- Plate incorporates a notch hole and screw hole, allowing customers to easily distinguish the direction and necessary angle to install.
- Screw size M5 or #10.



PART NUMBER

	A mm	B mm
M7-38-0506867-V2	58	40

SOCKET RAIL MOUNT

Stainless Steel 316

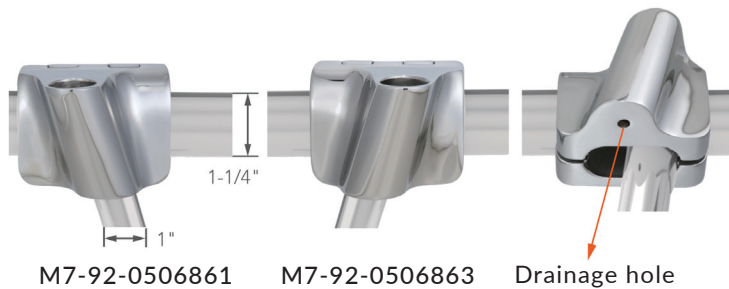
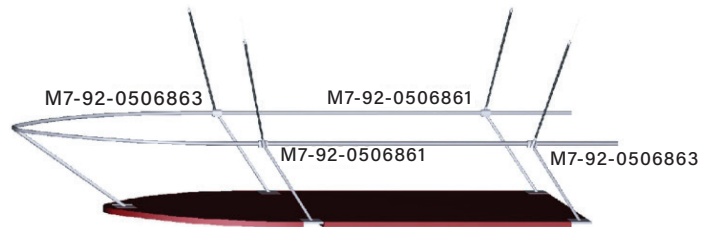
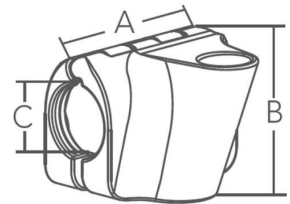
- Socket should be installed where supports meet the horizontal rail to ensure stability and prevent movement and turning underway. Sockets should be installed facing the outside of the boat.

- Designed with a 15° vertical angle combined with an outboard angle pointing away from the bow/stern to create a self-tensioning system.

- Fits 32 mm horizontal rails and 25.5 mm support rail.

- Self-draining design.

- 6.35 mm - 20T Allen screws are included.



PART NUMBER

	A mm	B mm	C mm
M7-92-0506861	80	61	32
M7-92-0506863	80	61	32



ACCESSORIES

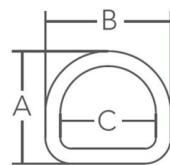
Stainless Steel 316

WELDED D RING

A welded D ring sewn into fabric for fastening is recommended.



M7-38-0618004

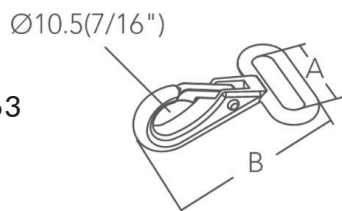


A : 30 mm
B : 33,6 mm
C : 25,5 mm
Ø : 4 mm

HEAVY DUTY WEBBING SNAP HOOK



M7-40-8928263



A : 26 mm
B : 50 mm

EYE STRAP

Screw size #6 or M4.



M7-40-2110014-8



A : 61 mm
B : 22 mm
Ø : 6 mm

SNAP HOOK

Screw size #8 or M4.
Sold in pairs.

Available in 2 variants.



Variant 1
M7-38-8631407

Variant 2
M7-38-8631406



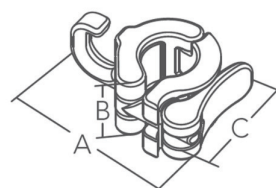
A : 38 mm
B : 33 mm
Ø : 24 mm

A : 42 mm
B : 33 mm
Ø : 24 mm

QUICK RELEASE HOOK



BN-102035



A : 60 mm
B : 24 mm
C : 24 mm

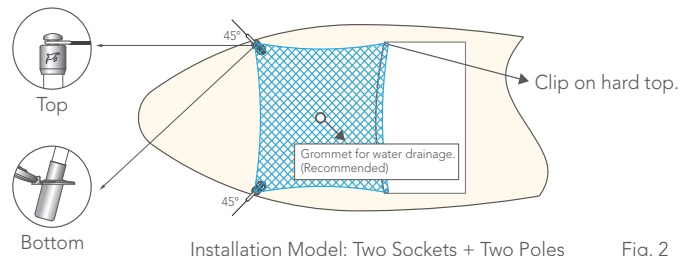


INSTRUCTIONS

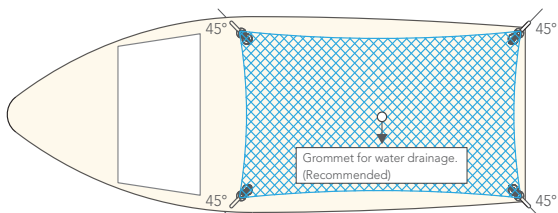
Typical installation will include four base sockets, four poles, and a single piece of fabric.

They should be installed in a four-corner pattern with 15° pointed 45° outward and opposing on all four corners. (Fig. 1) It is important to have the sockets aligned properly to give the top a necessary tension which also secures the poles in the sockets without using pins or other fasteners.

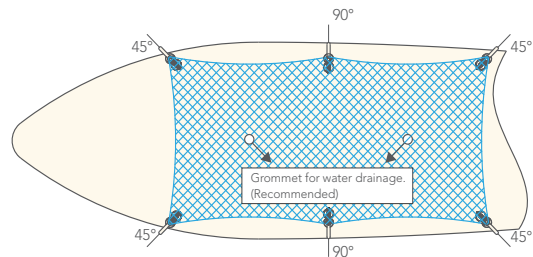
For different boat models, please refer to Fig. 2 and Fig. 3.



Installation Model: Two Sockets + Two Poles Fig. 2



Installation Model: Four Sockets + Four Poles Fig. 1



Installation Model: Six Sockets + Six Poles Fig. 3

RECOMMENDATION FOR FABRIC

1. Measure center to center of the socket holes which leaves the canvas smaller than the outmost points of poles. (Fig. 4)

2. Fabric cutout recommendation:
center to center size + 2 χ
Please refer to the chart and Fig. 5.
Fold over each side and sew for reinforcement.
Sew in a welded D ring with \varnothing 4mm(3/16").

Item No.	A	B	Folded Fabric Size (χ)
0506851	1215(47-13/16")	303(11-15/16")	$\chi = 25.4(1")$
0506852	1372(54")	357(14-1/16")	$\chi = 53.4(2-1/8")$
0506853	1535(60-7/16")	386(15-3/16")	$\chi = 82.5(3-1/4")$
0506854	1700(67")	440(17-5/16")	$\chi = 113(4-7/16")$
0506855	1845(72-5/8")	466(18-3/8")	$\chi = 139.7(5-1/2")$
0506856	2000(78-3/4")	518(20-3/8")	$\chi = 169.2(6-11/16")$

Unit: mm

3. Recommend installation of a grommet for water drainage if the fabric is not effective in enabling water to penetrate.

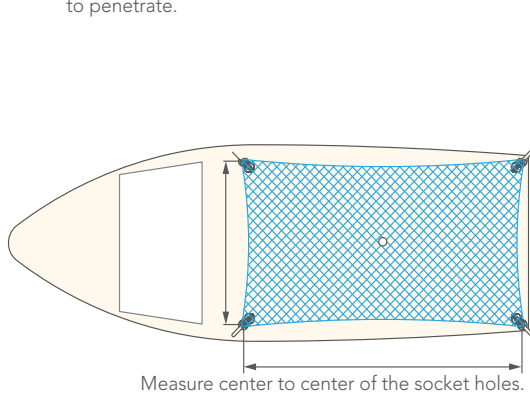


Fig. 4

Fabric Cutout

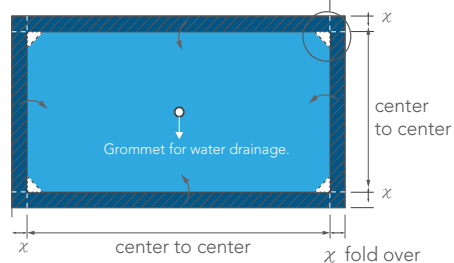


Fig. 5

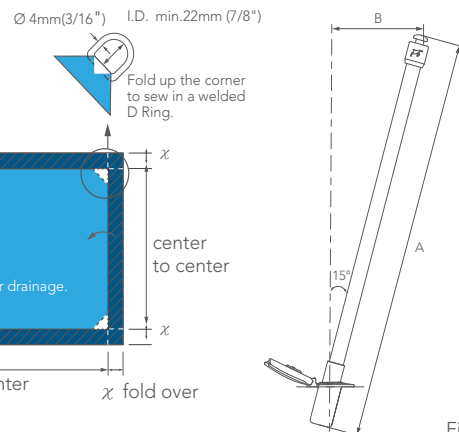


Fig. 6

For technical and availability information,
please contact Onmar.

+46 (0) 16 42 86 80
info@onmar.com
www.onmar.com



ENHANCING BRAND VALUE